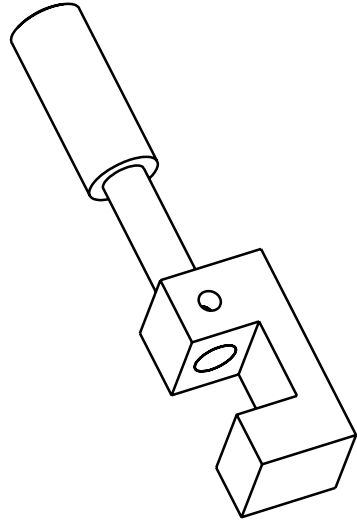
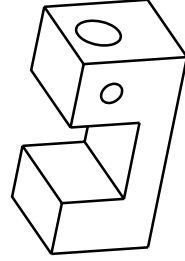
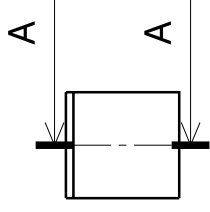
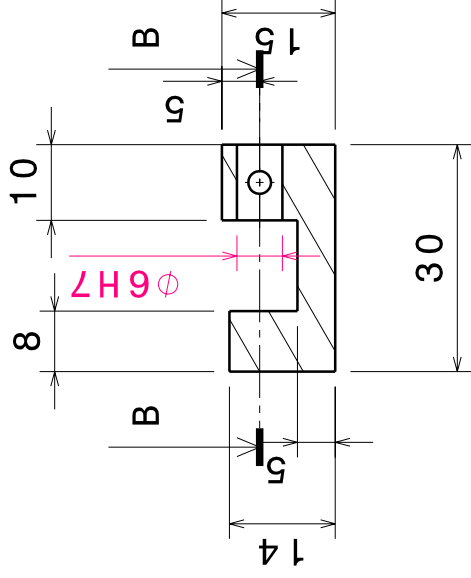


Schnitt A-A  
Maßstab: 1:1

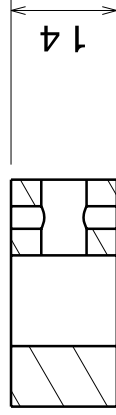


Isometrische Ansicht  
Maßstab: 1:1

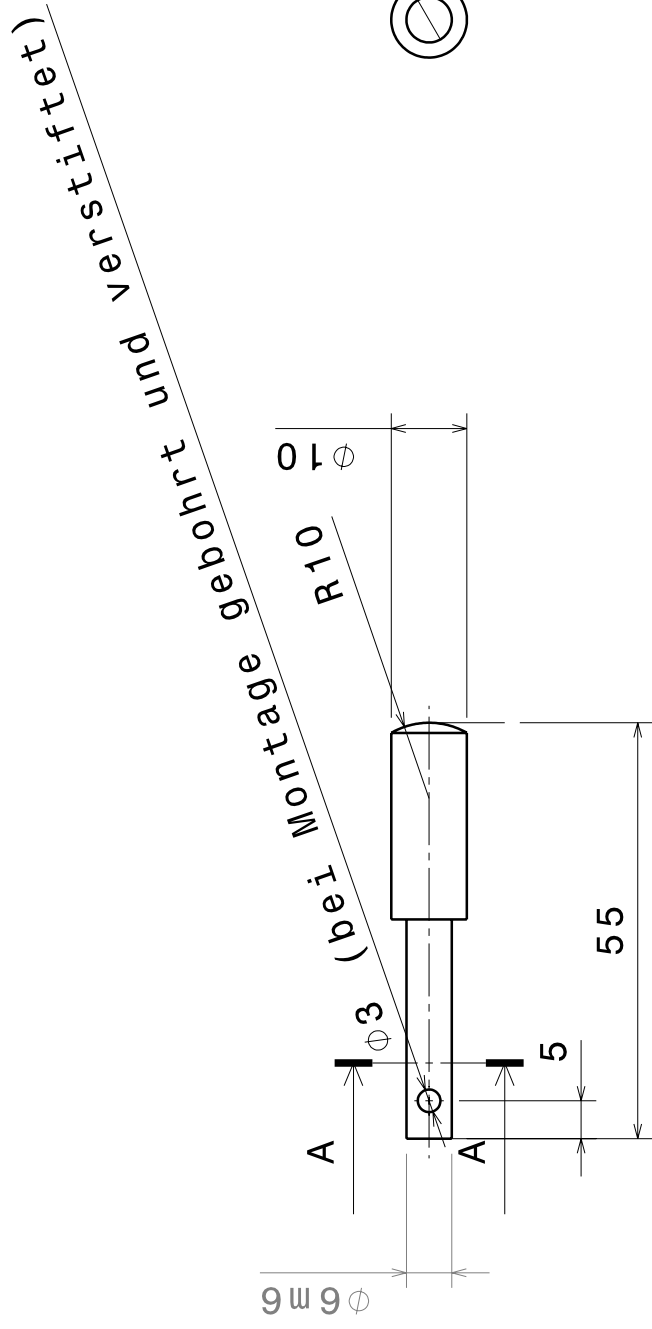
SchnittA-A  
Maßstab: 1:1



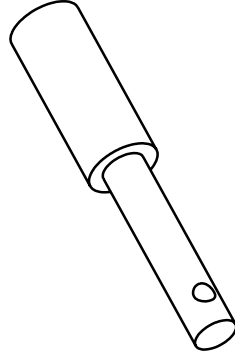
Isometrische Ansicht  
Maßstab: 1:1



SchnittB-B  
Maßstab: 1:1



Schnitt A-A  
 Maßstab: 1:1



Isometrische Ansicht  
 Maßstab: 1:1